

State of Wyoming Corner Record

(In compliance with the CORNER PERPETUATION AND FILING ACT, Wyoming Statutes, 1977, Section 36-11-101, et. seq., and the Rules and Regulations of the Board of Registration for Professional Engineers and Professional Land Surveyors)

Reverse side of this form may be used if more space is needed

Record of original survey and citation of source of historical information (if corner is lost or obliterated). Description of corner monumentation evidence found and/or monument and accessories established to perpetuate the location of this corner. Sketch of relative location of monument, accessories, and reference points with course and distance to adjacent corner(s) (if determined in this survey). Method and rationale for reestablishment of lost or obliterated corner.

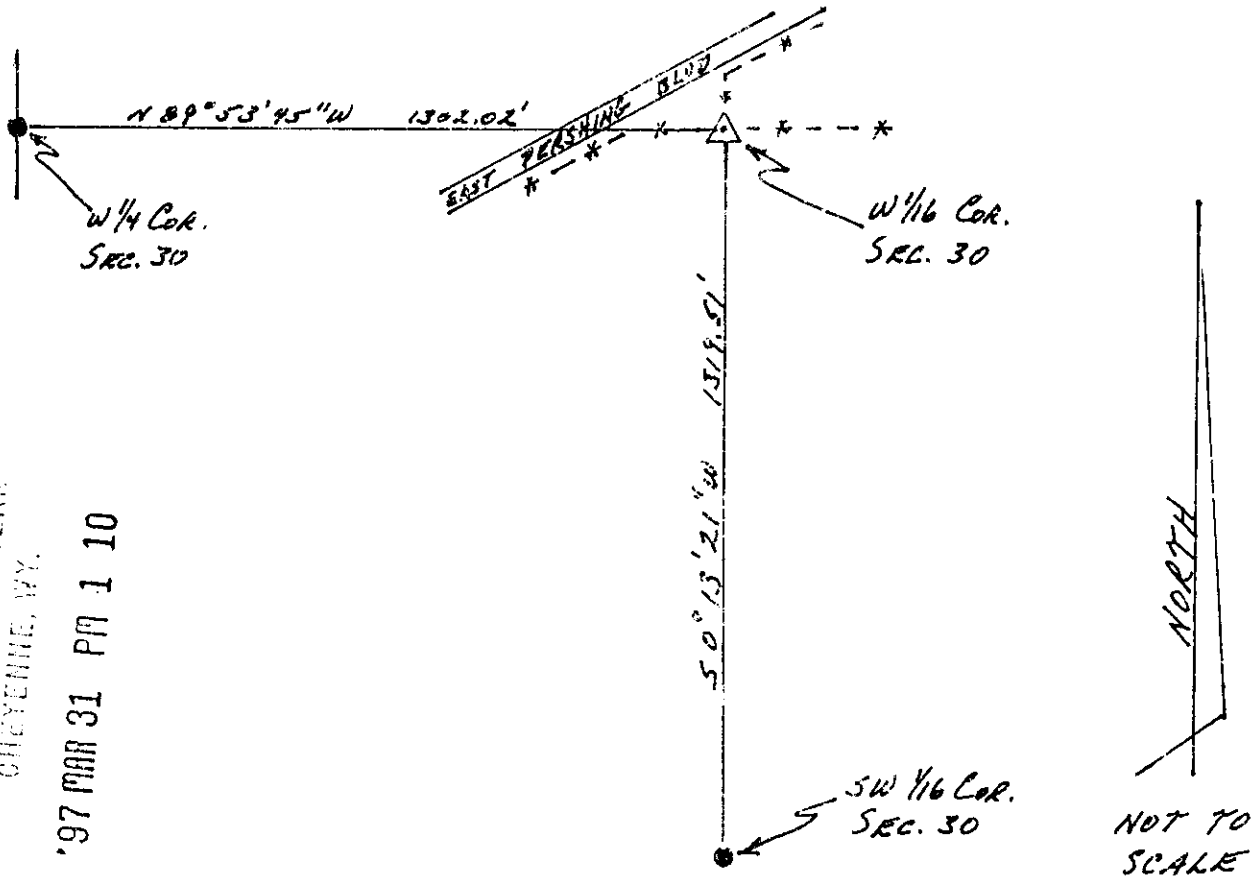
W 1/16 Corner Section 30, T14N, R65W, 6th P.M., Laramie County, Wyoming.

G.L.O. RECORD: none.

OTHER RECORDS: none.

FOUND: none.

SET: I set a 30" long No.5 rebar with a 2 1/2" dia. aluminum survey cap stamped in accordance with B.L.M. Manual of Instructions and with "WYO. P.L.S. NO. 4828.



200169

LARAMIE COUNTY CLERK
CHEYENNE, WY.

'97 MAR 31 PM 1 10

CROSS INDEX DIAGRAM

	1	2	3	4	5	6	7	8	9	10	11	12	13	14	15	16	17	18	19	20	21	22	23	24	25
A																									
B																									
C		0				6					4					3					2				
D																									
E																									
F																									
G																									
H																									
I																									
J																									
K																									
L																									
M																									
N																									
O																									
P																									
Q																									
R																									
S																									
T																									
U																									
V																									
W																									
X																									
Y																									
Z																									

Date of Field Work: December 1995

Office Reference: _____

Firm/Agency, Address _____

John J. Studley, Wyo. P.L.S. No. 4828

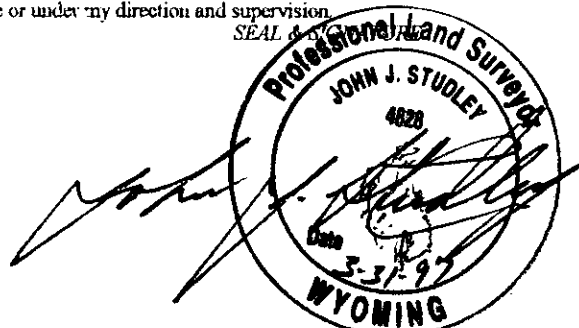
3509 Frontier Street

Cheyenne, Wyoming, 82001

Telephone Number: (307) 634-3358

This corner record was prepared by me or under my direction and supervision.

SEAL



Corner Name: W 1/16 Cor. Section 30, T 14 N, R 65 W, 6th P.M.

Cross-Index No.: T-2

SBRP-PLS-PLSW-March 1994